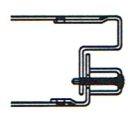


- G width cut out exposed glass
- H height cut out exposed top glass
- I height cut out exposed bottom glass
- J hinge stile from edge of door
- K lock stile from edge of door
- L top rail from edge of door
- M mid rail between cut out exposed glass



Sandwich kit



Full flush seamless kit



DLF flush kit

From "net sizes" Opening : Date: Drawn by: Sheet: of:

note : if otherwise noted 1/8" clearance for top and sides and 3/4" at bottom for pricing purposes
 : to be given exposed glass only for Full flush seamless and DLF flush kits